

reframing lebreton

Design Proposal for Ottawa's LeBreton Flats Parks
Canadian National Urban Design Competition 2024
Team registration number: 882802

Approaching nature with a feminist lens, our design prioritizes participatory creation and maintenance of space, in direct opposition to colonial conceptions of domination over our environments. With a focus on child-oriented design, we create a nurturing space that explores our relationship to landscape and our understanding of what is beautiful.

Modular sports equipment

Nets, posts, and rounds repurposed from local materials create endless possibilities for active play.



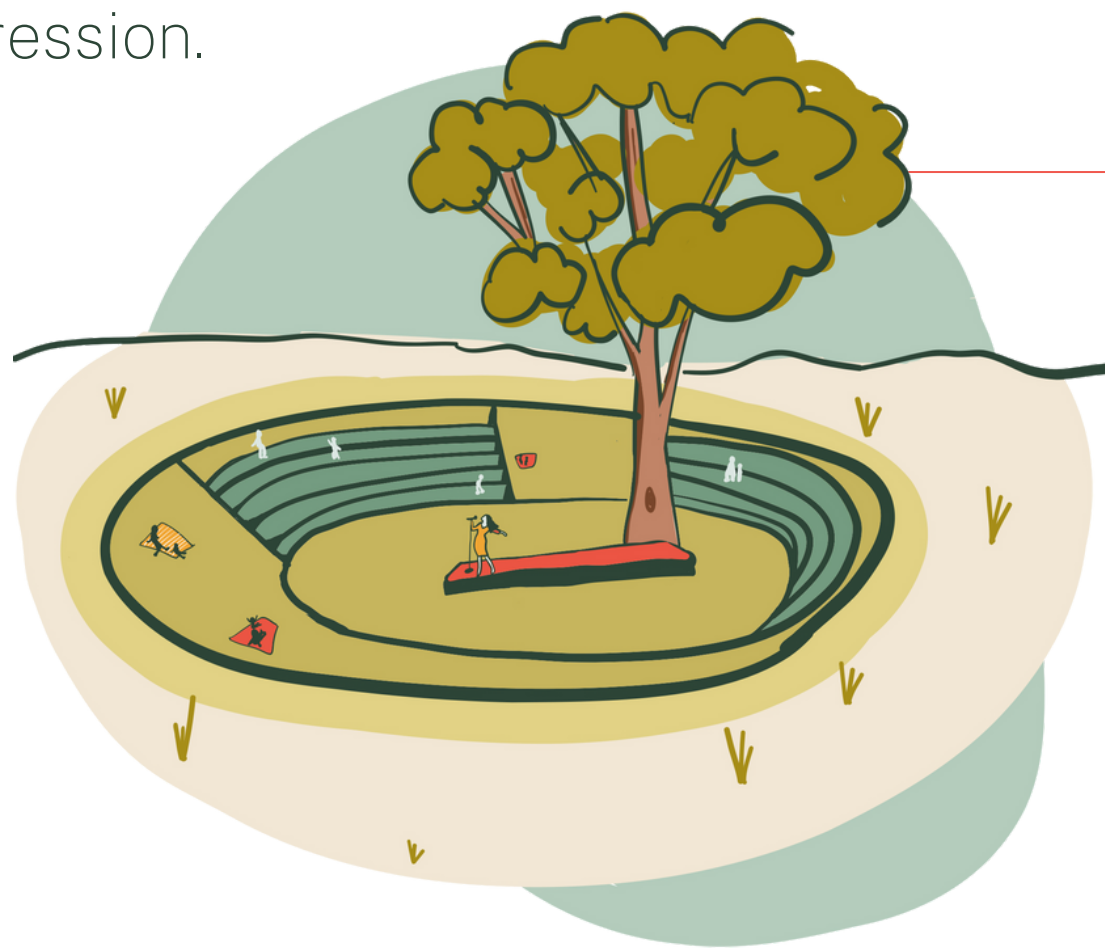
Playing with water

Encouraging risky play opportunities that interface with natural areas.



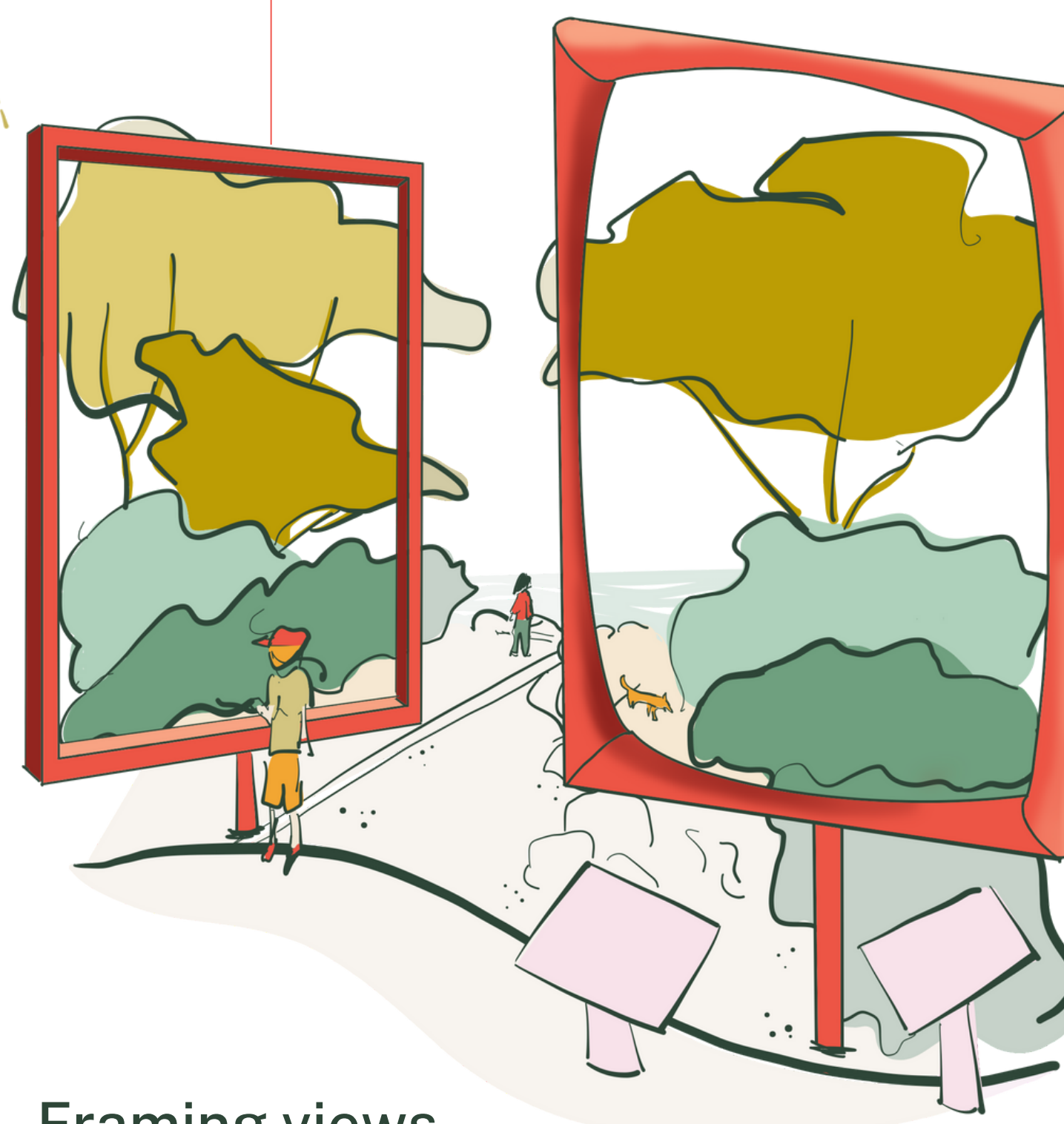
In the round performance space

A human-scale amphitheatre
that frames music as a
natural, communal form of
expression.



Framing views

Participatory public art that directs our
attention to the views valued by the community.



Playful walkway

A network of natural playgrounds and garden boxes that encourages connection and informal supervision of children.



Class outside

Nestled in the trees, outdoor teaching spaces offer a new perspective for learning.



Plants & natural materials

Play equipment and park materials are composed of locally-sourced indigenous wood species, such as white cedar and spruce. Fruit-bearing trees provide foraging opportunities for all visitors.