

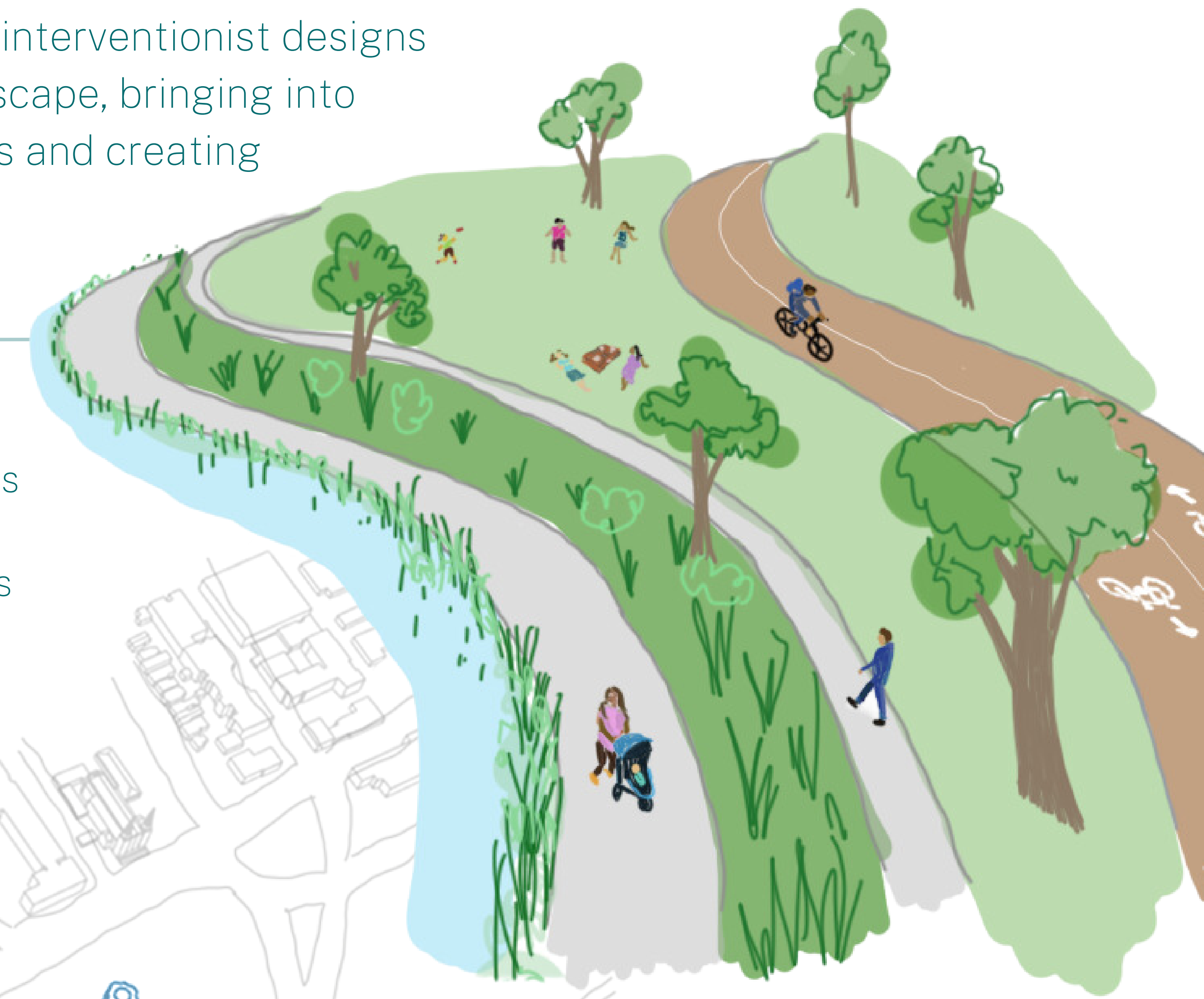
## Design Statement

Connection, accessibility, and public-focus are at the heart of this proposal. These interventionist designs tear across the colonial landscape, bringing into question our implicit priorities and creating a truly *public* space.

# RECLAIM THE WATER FRONT

### Lady Grey Drive Reimagined

Waterfront access  
and connected  
active travel lanes



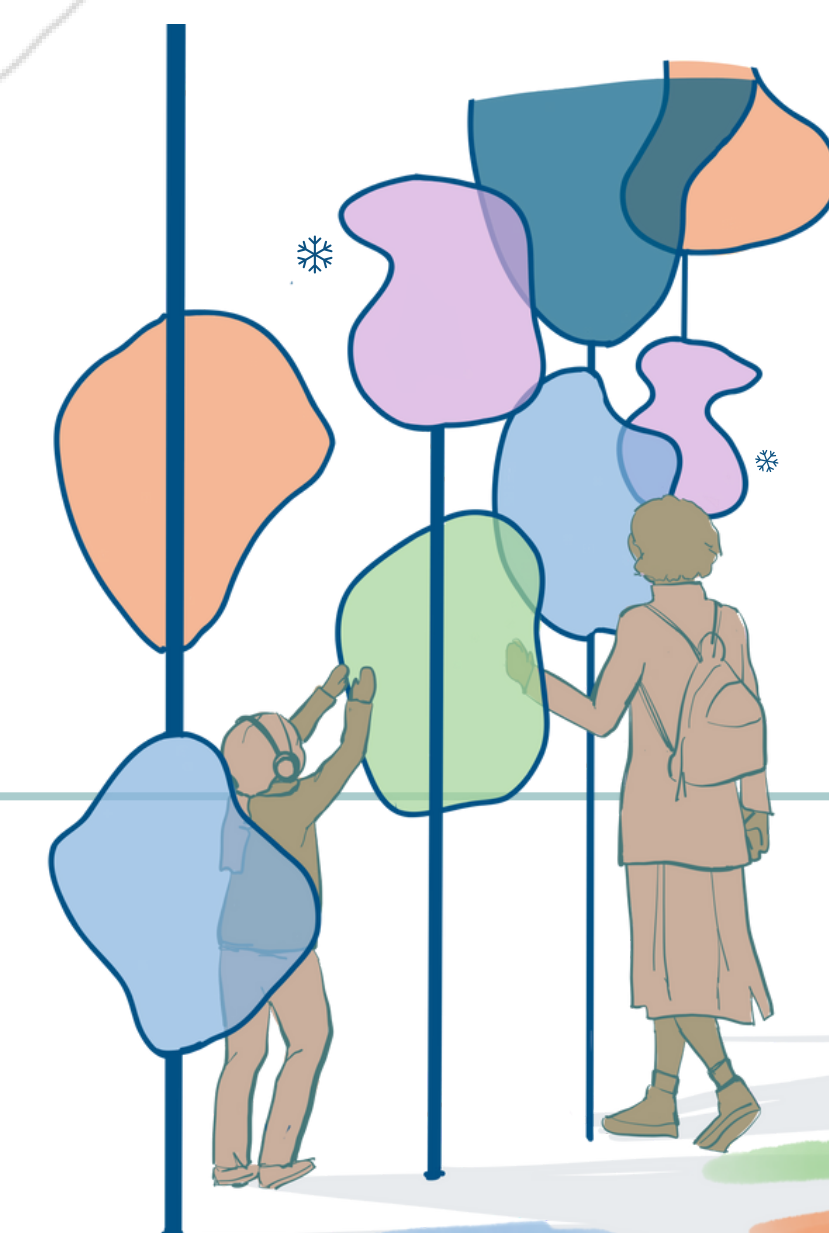
### Earnscliffe Reprogrammed

A new community and arts space  
housed in the iconic heritage home



### A window into the Mint

Imposing transparency onto  
Canada's federal landscape



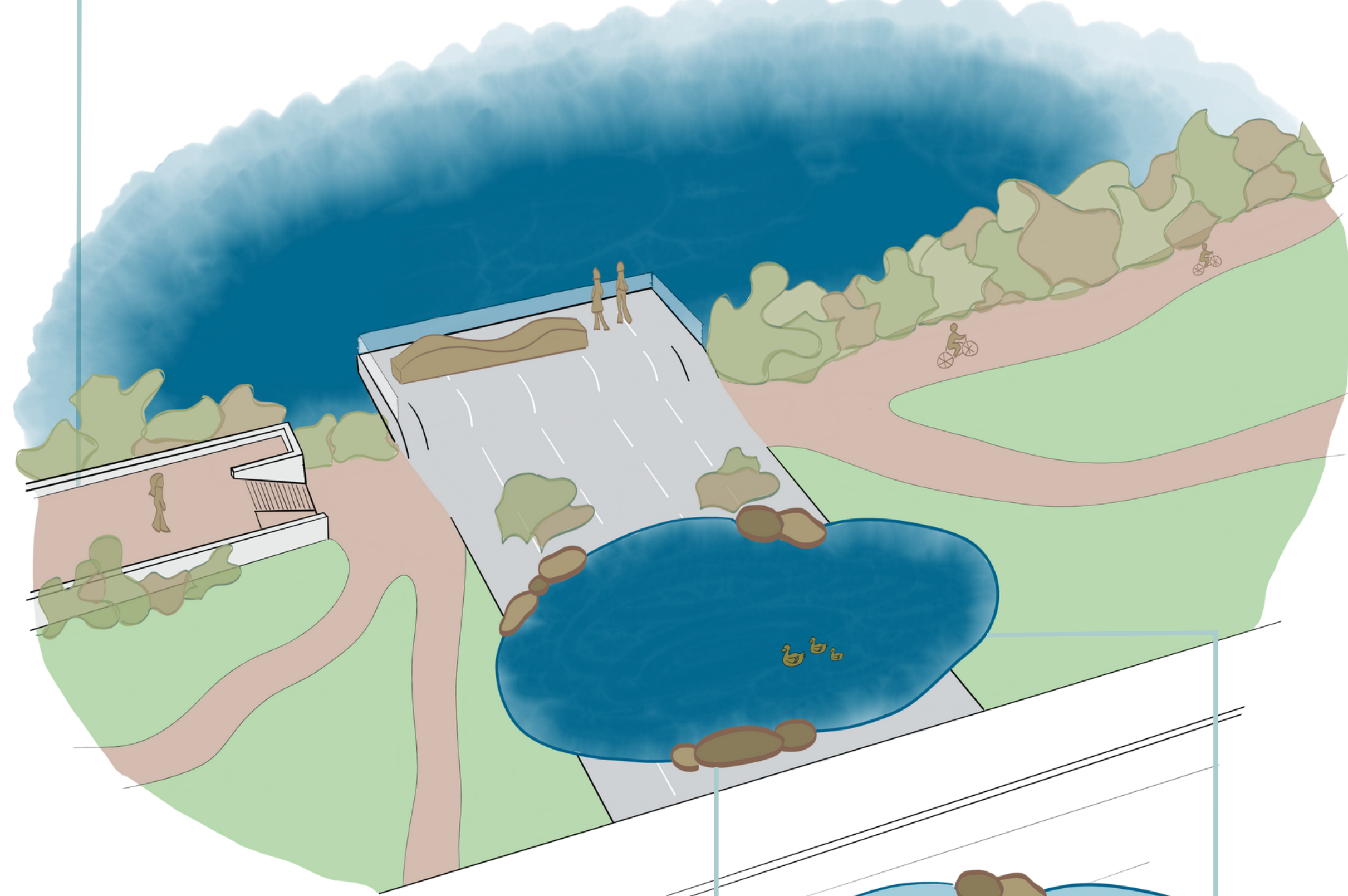
### Seasonal art exhibits

Opportunity to  
commission  
artists from the  
host Nations

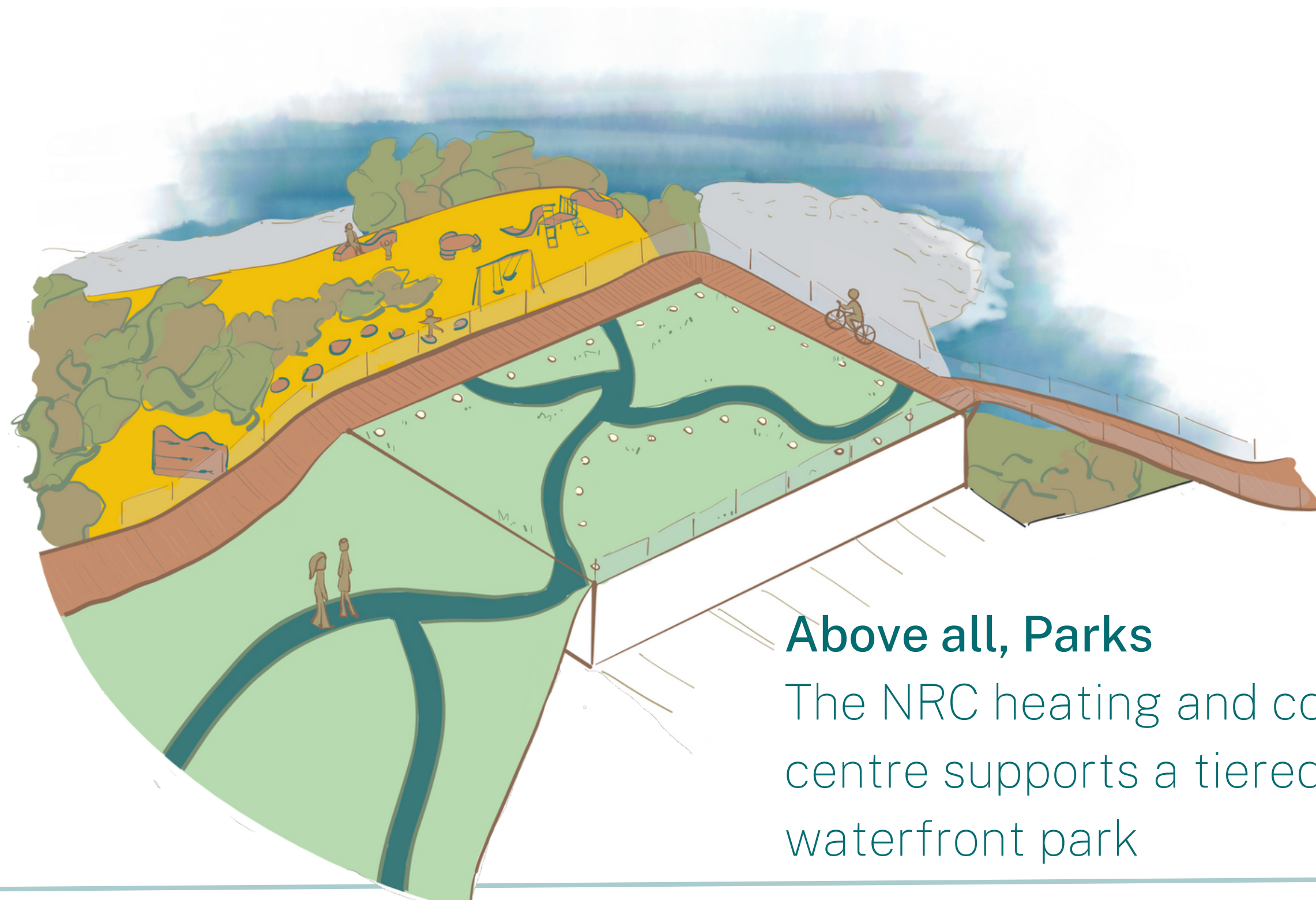
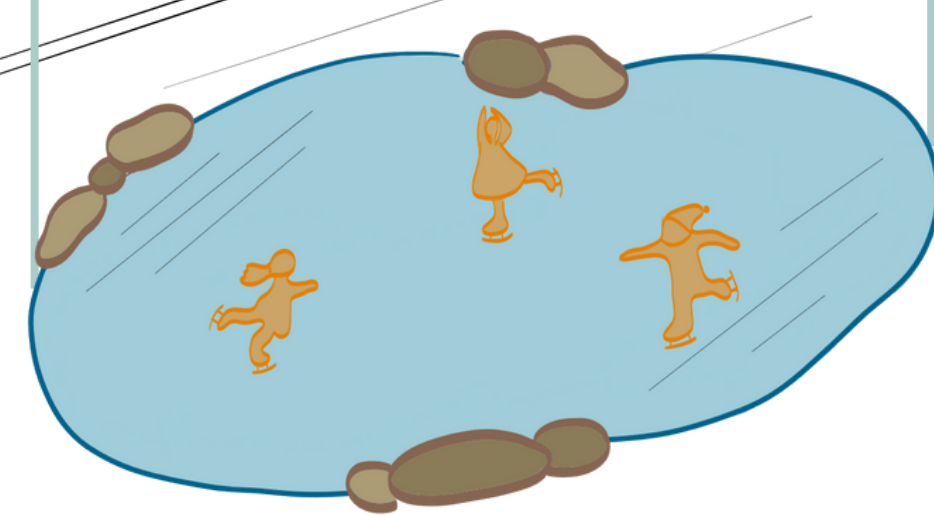


## Burning Bridges

The dismantling of the Macdonald-Cartier bridge and the repurposing of the road caters to the needs of pedestrians while leaving a visual reminder of the historical inaccessibility of the area



## Seasonal Ice Rink Activation

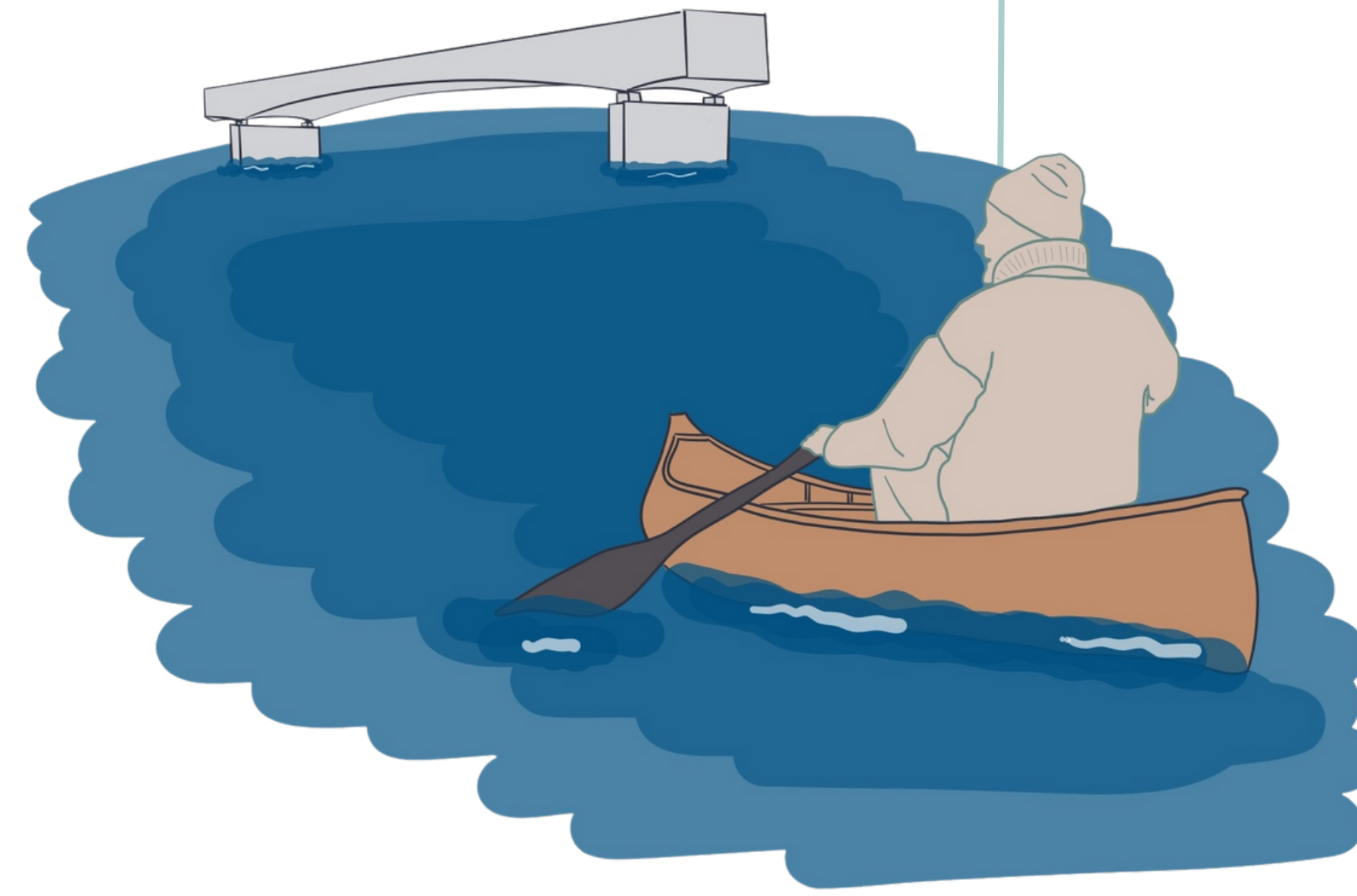


## Above all, Parks

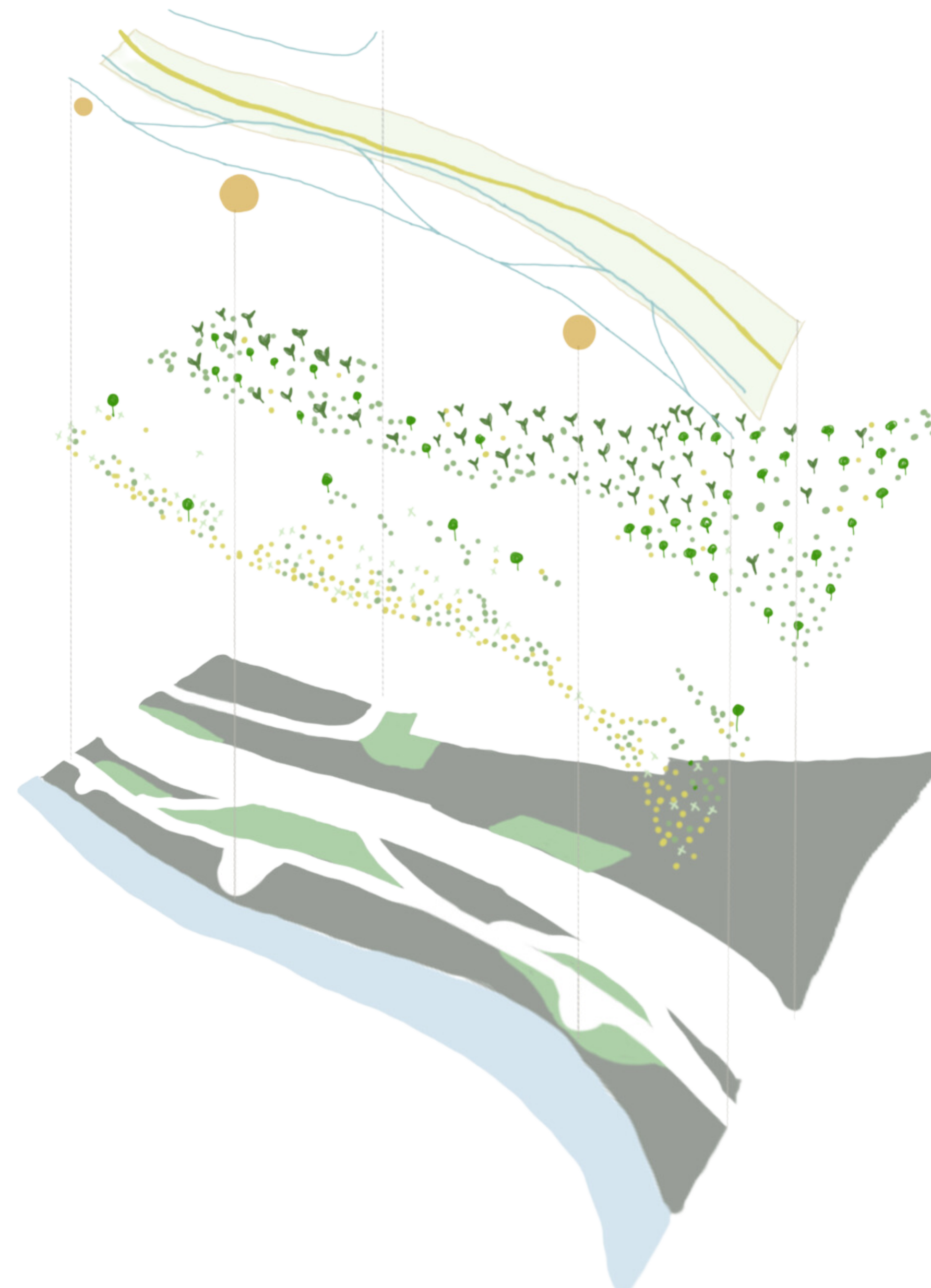
The NRC heating and cooling centre supports a tiered waterfront park

## Waterfront Activated

Extending the public realm onto the river through affordable rentals and programs



## Layers of Lady Grey



### transportation

- existing roadway
- proposed bikeway
- proposed walkway
- moments of pause

### flora

- white spruce
- white cedar
- buttonbush
- speckled alder
- silky dogwood

### public lawn space

### rewilded waterfront

### ottawa river

## Plant and Material Catalogue

- White Cedar
- White Spruce
- Butternut
- Buttonbush
- Northern Bush Honeysuckle
- Partridgeberry
- Wild Strawberry
- Speckled Alder
- Leda Clay

